

 **MARUTI SUZUKI** ARENA

248
MOTORS

SEYCHELLES

PRESENTING

V I C T O R I S

GOT IT ALL



248
MOTORS

SEYCHELLES

FOR THE DRIVE INSIDE YOU THAT WANTS IT ALL

Maybe it's the way it stands. Unshaken.
Self-assured. Maybe it's the way it moves.
As if it owns the road.
The Victoris is for the ones who know when
to hold back, and when to go all out. Who seek
out new adventures, new experiences.
Who refuse to settle for anything less than
everything.

For the ones who have it all. An SUV that's:

GOT IT ALL





THE CHISELED LOOK THAT SAYS IT ALL



The Victoris speaks in a design language that's impossible to ignore. Its sweeping silhouette and sculpted lines create a stance that's dynamic when in motion and commanding when still. The seamless tail light stretches across the rear, leaving a signature that lingers long after it's gone.





CRAFTED FOR ALL YOUR SENSES



A cabin tailored for those who know what they want. Everything. With a touch of class.

Its expansive design with dual-tone interiors, panoramic sunroof, vibrant 64-colour ambient lighting, right down to the elegant three-level dashboard with precision stitching; creates a space that serenades all your senses.



64-COLOUR AMBIENT LIGHTING



PANORAMIC SUNROOF



PLUSH LEATHERETTE SEATS



ALL YOU NEED FOR COMPLETE PEACE OF MIND



Safety is more than just a feature. It's a promise. It's the quiet assurance that's inherent to every aspect of the Victoris. Where advanced driver-assist technology works seamlessly with intuitive features to create a drive that feels unshakably secure.

So, while the road may throw its share of surprises, you stay confidently in control.



6 AIRBAGS STANDARD



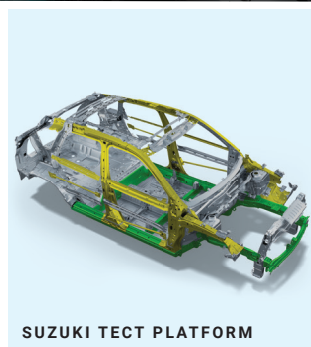
FRONT PARKING ASSIST SENSOR WITH
AUTO 360° CAMERA ACTIVATION



360° VIEW HD CAMERA
WITH 11 VIEWS



ELECTRONIC PARKING BRAKE
WITH BRAKE HOLD



SUZUKI TECT PLATFORM



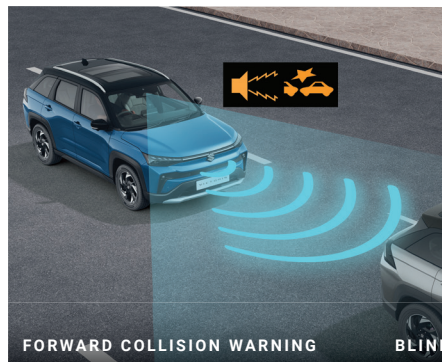
ADVANCED LEVEL 2 ADAS

Real confidence comes from knowing that your car is always thinking two steps ahead. The Level 2 ADAS on the Victoris preempts, and protects you, as your ever-present guardian.



LEVEL 2 ADAS* FEATURES

- Lane Keep Assist
- Automatic Emergency Braking
- Forward Collision Warning
- Blind Spot Monitor with Lane Change Alert
- Adaptive Cruise Control with Curve Speed Reduction
- High Beam Assist
- Lane Departure Prevention
- Lane Departure Warning
- Rear Cross Traffic Alert
- Vehicle Sway Warning



FORWARD COLLISION WARNING



BLIND SPOT MONITOR WITH LANE CHANGE ALERT



AUTOMATIC EMERGENCY BRAKING



ADAPTIVE CRUISE CONTROL WITH CURVE SPEED REDUCTION



LANE KEEP ASSIST

*Advanced Driver Assistance System (ADAS) is not a substitute for human eye and driver vigilance, it is a driver assist system that enhances driving experience and safety. The system performance may vary from road and driving conditions. The driver shall remain responsible for safe, vigilant and attentive driving. Features and specifications may vary model wise.



SMART POWERED TAILGATE WITH GESTURE CONTROL

Hands full? Just a swipe with your foot makes access to the boot effortless.

ALL-IN ON COMFORT



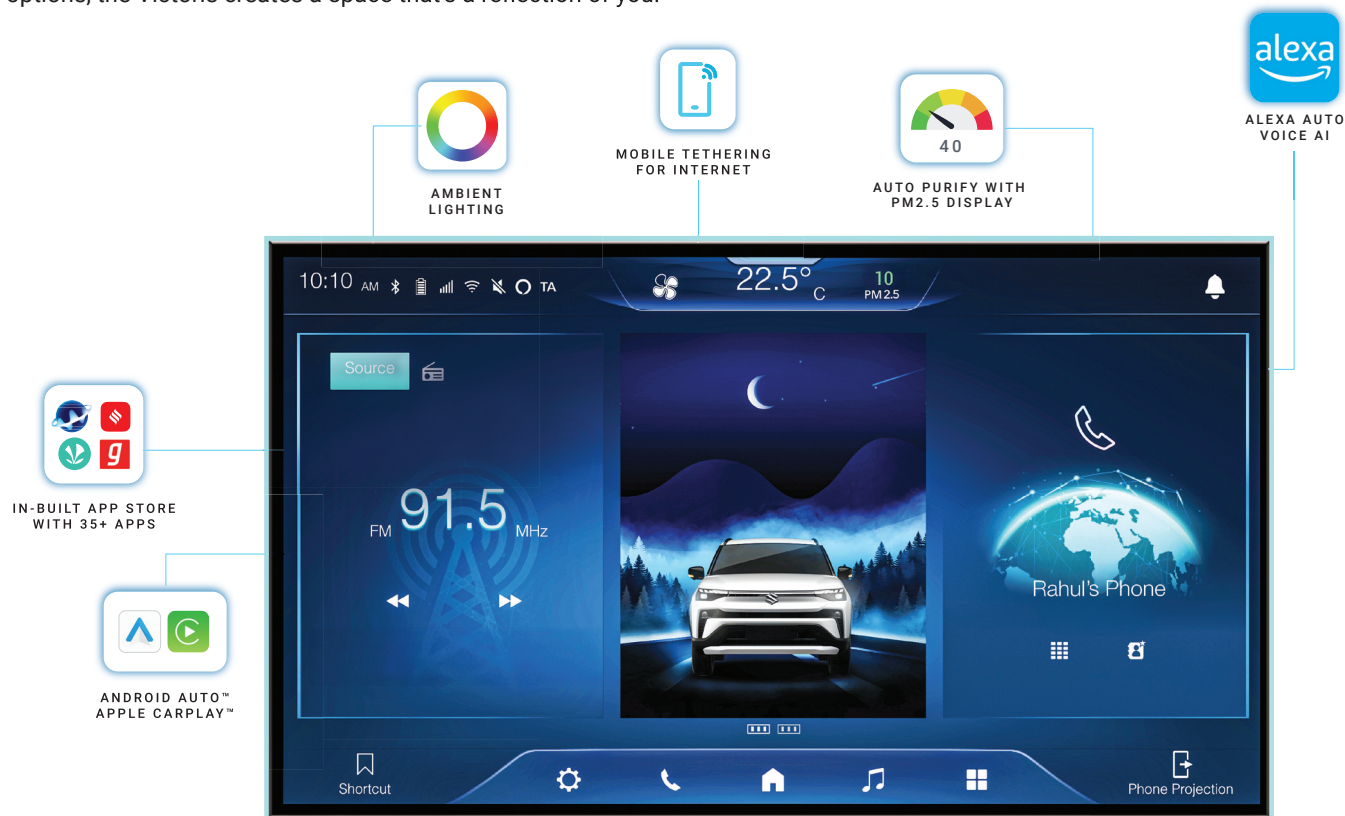
In the Victoris, comfort begins long before the journey does. It starts the moment you settle in. The cool embrace of the ventilated seats. The effortless reach of every control.

Every aspect of the Victoris adjusts to your personalised comfort to ensure that the road ahead feels less like travel and more like an experience.



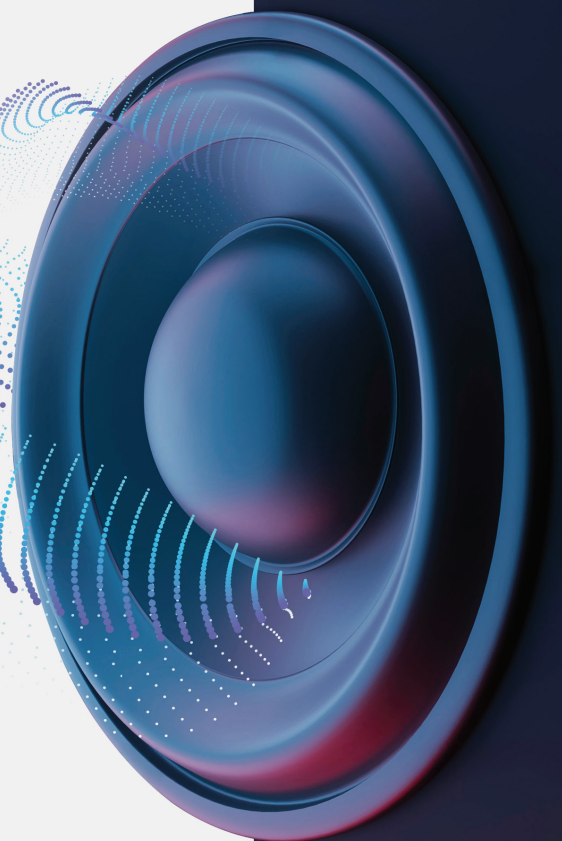
ALL THE TECH. ALL FOR YOU.

Experience intuitive tech at its best with the Smartplay Pro X Touchscreen Infotainment System. With all your preferred connectivity features, an extensive app store, and a host of personalization options, the Victoris creates a space that's a reflection of you.



IMMERSIVE INFINITY SPEAKERS WITH DOLBY ATMOS SPATIAL SOUND EXPERIENCE

Every whisper, every raindrop gets its own spotlight with 8 finely-tuned speakers from Infinity by Harman. The immersive Dolby Atmos Spatial Sound Experience sets the stage for the most vibrant crescendos and dramatic silences. Your drive is where the sound comes alive.





NEXT GEN SUZUKI CONNECT WITH E-CALL

With over 60 smart features, get real-time insights, emergency alerts and vehicle status, on your smartwatch or mobile. The next-gen Suzuki Connect helps you stay connected, informed, and in control, wherever you go.

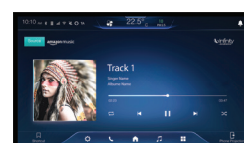


ALEXA AUTO ON-BOARD

Now take Alexa along for the drive with Alexa Auto Voice AI and over 40 smart features. Stream music, ask questions, and even control smart appliances at home. Experience hands-free convenience, designed for the road.



ALEXA AUTO VOICE AI WITH 40+ FEATURES





PERFORMANCE THAT GOES ALL OUT.

From quick sprints to steady climbs, the Victoris adapts seamlessly to every road and every mood. Agile when the moment calls for it, effortless when the journey demands it. Every drive is tuned to respond to you, delivering exhilaration and calm in equal measure.

248 MOTORS

SEYCHELLES

AVAILABLE IN:

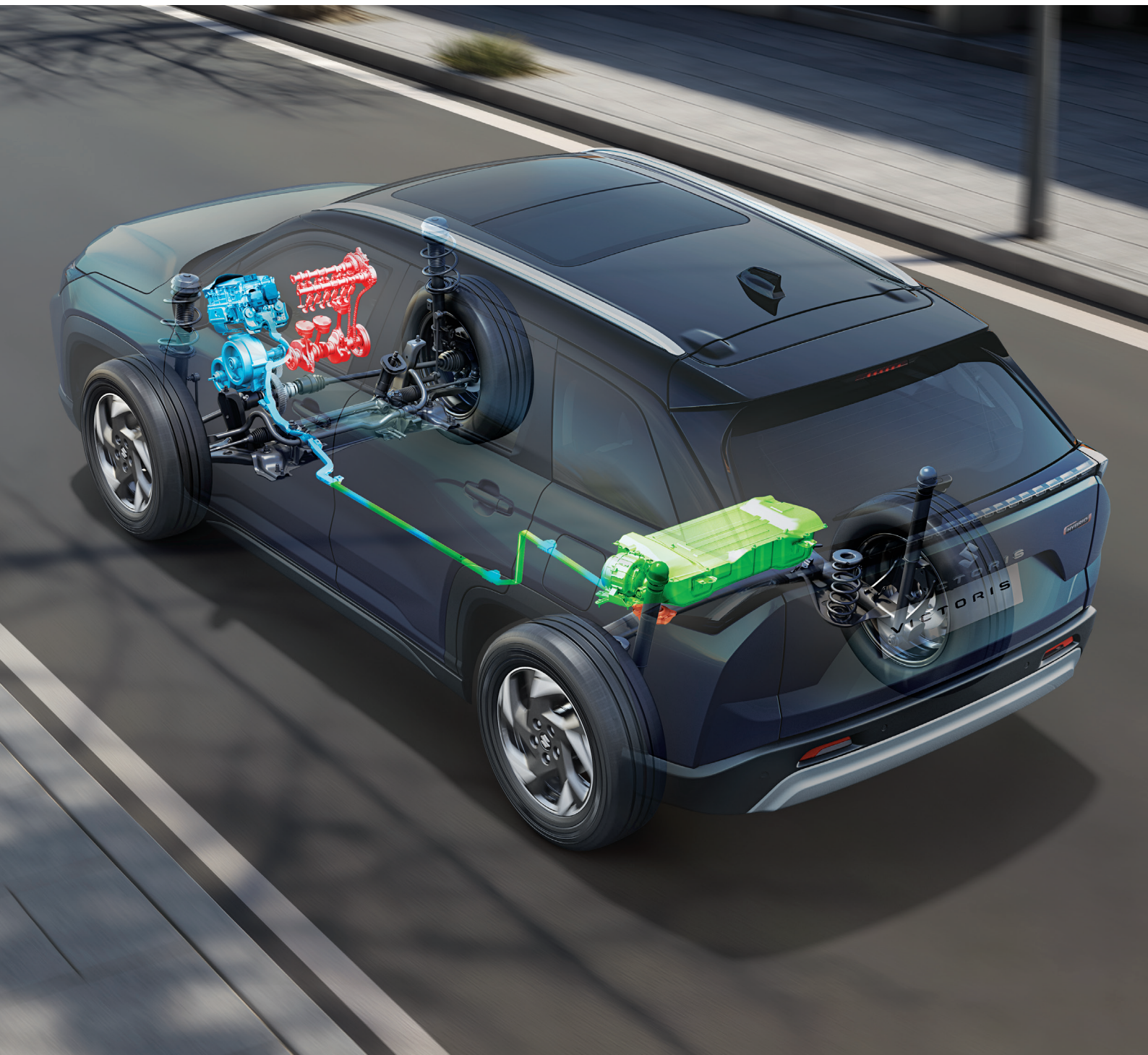


FUTURISTIC STRONG HYBRID



For the ones who prefer power without compromise, the Strong Hybrid is the perfect ally.

Paired with a battery pack, its refined and silent drive delivers a performance that's smooth, confident, and efficient. With the Victoris, expect nothing less than everything.



ALL-TERRAIN ALLGRIP SELECT



For the ones who own every road they tread, the Victoris with Suzuki ALLGRIP Select is the ultimate companion. From city streets to untamed trails, it adapts seamlessly to challenging terrains, delivering a drive that is as controlled as it is adventurous. Powerful, commanding, and uncompromising, at every turn.



ALL-NEW UNDERBODY S-CNG



A clear boot space with a clean conscience. The Victoris with factory-fitted underbody S-CNG ensures that every journey remains uncompromised. Its clean engine exceeds the fuel efficiency you expect. Its clever design frees-up every inch of your boot space. Its in-built safety features preserve your peace of mind. It's a win-win-win for the Victoris.



THE EXHILARATING SMART HYBRID



The always reliable K15C engine with progressive mild hybrid technology spoils you for choice. Feel every gear shift with a 5-Speed Manual Transmission as it delivers the perfect balance of power and precision for the purist. 6-Speed Automatic Transmission with paddle shifters let you effortlessly switch between control and convenience. When every shift is smooth, and every acceleration confident, you feel like you own the world - all of it.



ADVANCED PETROL K15C ENGINE
WITH PROGRESSIVE MILD HYBRID



6-SPEED AUTOMATIC TRANSMISSION
WITH PADDLE SHIFTERS



5-SPEED MANUAL TRANSMISSION



GOT IT ALL - IN EVERY COLOUR

The all-new Victoris comes in a variety of stunning hues that are sure to vibe with you.

DUALTONE

NEW



ETERNAL BLUE BLUISH BLACK ROOF



SIZZLING RED BLUISH BLACK ROOF



SPLENDID SILVER BLUISH BLACK ROOF

MONOTONE

NEW



ETERNAL BLUE



SIZZLING RED

NEW



MYSTIC GREEN



BLUISH BLACK



MAGMA GREY



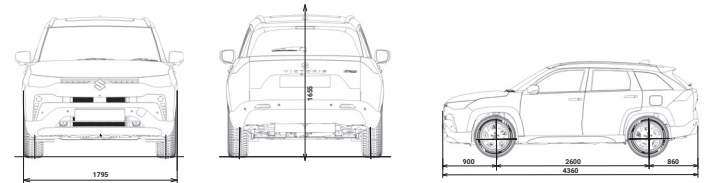
SPLENDID SILVER



ARCTIC WHITE

248
MOTORS
SEYCHELLES

FEATURE SPECIFICATIONS		PETROL	PETROL/CNG	STRONG HYBRID
Length (mm)			4360	
Width (mm)			1795	
Height (mm)			1655	
Wheelbase (mm)			2600	
Turning Radius (m)			5.4	
Fuel Efficiency		21.18 km/l (MT), 21.06 km/l (AT), 19.07 km/l (ALLGRIP AT)	27.02 km/kg	28.65 km/l (Strong Hybrid Petrol e-CVT)
Fuel Tank Capacity (L)		45	Petrol: 45 CNG: 55 (water eqvt)	45
Seating Capacity (nos)			5	
Kerb Weight (kg)		1145-1195* (MT) 1185-1225* (AT) 1285-1305* (ALLGRIP AT)	1230-1245	1250-1295
Gross Vehicle Weight (kg)		1655(MT), 1685 (AT), 1765 (ALLGRIP AT)	1695	1755
ENGINE				
Engine Type		K15C Smart Hybrid	K15C	M15D
Displacement (cc)		1462		1490
Fuel Type		Petrol	Petrol+CNG	Petrol (Strong Hybrid)
Max Power		75.8 kW (103.06 Ps) @ 6000 rpm	74 kW (100.6 Ps) @ 6000 rpm - Petrol Mode 64.6 kW (87.8 Ps) @ 5500 rpm - CNG Mode	68kW (92.45 Ps) @ 5500 rpm
Max Torque		139 Nm @ 4300 rpm	137.1 Nm @ 4300 rpm - Petrol Mode 121.5 Nm @ 4200 rpm - CNG Mode	122 Nm @ 3800-4800 rpm
HYBRID SYSTEM				
Battery Type		Lithium-ion	-	Lithium-ion
Battery Voltage		-	-	177.6 V
Motor Generator Type		-	-	AC Synchronous Motor
Max Power		-	-	59 kW (80 Ps) @ 3995-5500
Max Torque		-	-	141 Nm @ 0-3995
Driving Mode		-	-	ECO + Normal + Power
ISG		12V - 6Ah (L-Ion)	-	-
TRANSMISSION				
Type		SMT/6AT	SMT	e-CVT
DRIVE				
Type		2WD/4WD (ALLGRIP SELECT)	2WD	2WD
SUSPENSION				
Front			MacPherson Strut	
Rear			Torsion Beam	
BRAKES				
Front			Disc	
Rear			Disc	
WHEEL TYRE				
Tyre Size			215/60 R17	
POWERTRAIN				
		Lxi	Vxi	Zxi / Zxi (O)
1.5L K15C Petrol ISG	5-speed Manual Transmission (SMT)	-	✓	✓
	6-speed Automatic Transmission (6AT)	-	✓	✓
	AllGrip Select (6AT)	-	-	✓
1.5L K15C Petrol CNG (SMT)		✓	-	Zxi only
1.5L M15D	Strong Hybrid (eCVT)	-	-	✓



Drawings shown are general specifications of the vehicle.

FEATURE SPECIFICATIONS					
VARIANTS	Lxi	Vxi	Zxi / Zxi (O)	Zxi+ / Zxi+ (O)	
EXTERIOR					
Front Headlamps	Projector Headlamps	Halogen	Halogen	LED	LED
	Positioning Lamps	Halogen	Halogen	LED	LED
	LED Daytime Running Lamps - Dual Function	-	-	✓	✓
	Auto Headlamps with Follow-Me-Home Function	-	-	✓	✓
	LED Front Fog Lamps with Extended Lighting	-	-	✓	✓
Rear Tail Lamps	Dynamic Connected LED Tail Lamps	-	-	✓	✓
	LED Rear Combination Lamp (with LED Indicator)	✓	✓	✓	✓
Wheel Spec	Alloy Wheels	✓	✓	✓ (Painted - Black)	✓ (Machined)
	Steel Wheels with Full Wheel Covers	-	-	✓	-
	Front Grille Garnish	Chrome	Chrome	Satin Chrome	Satin Chrome
	Skid Plate (Front & Rear)	Silver	Silver	Silver - Petrol, S-CNG	Silver - Petrol, S-CNG
	All Door Gloss Black Out Tape	-	-	✓	✓
	Front Door UV Cut Glasses	-	-	✓	✓
	Rear Door Dark Green Glass	-	-	✓	✓
	Body Coloured Outside Door Handles	-	✓	✓	✓
	Body Coloured ORVMs	-	✓	✓	✓
	ORVMs with Turn Indicators	-	✓	✓	✓
	Roof Rails	-	✓	✓	✓
	Roof & Quarter Spoiler	✓	✓	✓	✓
	Rear Defogger	✓	✓	✓	✓
	Shark Fin Antenna	✓	✓	✓	✓
	Aero Vents & Aero Edges	-	-	✓	✓
	Front Variable Intermittent Wipers	-	-	✓	✓
	Rear Window Wiper & Washer	-	-	✓	✓
	LED High Mount Stop Lamp	✓	✓	✓	✓
INTERIOR					
Interior Theme	Dual Tone Interior (Black + Ivory) with Silver Accents	✓	✓	✓ (Petrol, S-CNG)	✓ (Petrol, S-CNG)
	All Black Interior with Champagne Gold Accents	-	-	✓ Strong Hybrid	✓ Strong Hybrid
	Door Trim & IP Garnish - Piano Black	✓	✓	✓	✓
	Chrome Inside Door Handles	-	✓	✓	✓
	Soft Touch IP with Premium Stitch (Black & Ivory-Petrol / Black-Strong Hybrid)	-	-	✓	✓
Upholstery	Plush Leatherette Seats (Black & Ivory-Petrol / Black-Strong Hybrid)	-	-	✓	✓
	Door Trim Armrest	Black Fabric	Black Fabric	Ivory PVC+Stitch- Petrol, S-CNG/Black PVC+Stitch-Strong Hybrid	Ivory PVC+Stitch- Petrol, S-CNG/Black PVC+Stitch-Strong Hybrid
	Leatherette Steering Wheel	-	-	✓	✓
64 Color Custom Ambient Light	Instrument Panel	-	-	✓	✓
	Door	-	-	✓	✓
	Glove Box Light	-	-	✓	✓
	Front Footwell Light (Driver & Co-Driver Side)	-	-	✓	✓
	Courtesy Lamp	-	-	✓	✓
	Trunk/Luggage Room Lamp	-	-	✓	✓
	Rear Reading Lamps	-	-	✓	✓
	Multi Information Instrument Cluster	10.66 cm (4.2") TFT	-	✓	✓
	Full Digily 26.03 cm (10.25") TFT	-	Strong Hybrid	✓	✓

COMFORT & CONVENIENCE					
Smart Powered Tailgate with Gesture Control	-	-	-	-	-
Panoramic Sunroof	-	-	(O)	-	(O)
Seating	Ventilated Seats (Driver + Co-Driver)	-	-	-	-
	8-Way Driver Powered Seat	-	-	-	-
	Seat Height Adjuster	-	-	-	-
	60/40 Folding Rear Seats	✓	✓	✓	✓
	Adjustable Headrests - All Seats	✓	✓	✓	✓
	Front Seat Back Pocket	-	-	✓	✓
Head Up Display	-	-	-	-	-
Wireless Charger with Active Cooling	-	-	-	-	-
Auto Purify with PM 2.5 Display	-	-	-	-	-
Charging	USB Charger Rear Type C+C (45 W + 45 W, Max 60 W)	-	✓	✓	✓
	USB Charger Front	✓ (Type A)	✓ (Type A)	✓ (Type A)	✓ (Type C-15W + Type C-45W)
	Accessory Socket (Center Console)	✓	✓	✓	✓
	Accessory Socket (Luggage Room)	✓	✓	✓	✓
Push Start with Smart Key	-	✓	✓	✓	✓
Auto AC	-	✓	✓	✓	✓
Cabin Air Filter	Pollen	PM 2.5	PM 2.5	PM 2.5	PM 2.5
Rear AC Vents	✓	✓	✓	✓	✓
Auto Folding ORVMs	-	-	-	-	-
Electrically Foldable ORVMs	-	-	-	-	-
Vanity Mirror (Driver + Co-Driver)	-	✓	✓	✓	✓

FEATURE SPECIFICATIONS				
VARIANTS	Lxi	Vxi	Zxi / Zxi (O)	Zxi+ / Zxi+ (O)
COMFORT & CONVENIENCE				
Vanity Mirror Lamp (Driver + Co-driver)	-	-	-	✓
Front Sliding Armrest (with Storage)	✓	✓	✓	✓
Rear Center Armrest with Cup Holder	✓	✓	✓	✓
Sunglass Holder	-	-	✓	✓
Adjustable Tilt & Telescopic Power Steering	✓	✓	✓	✓
Cruise Control	-	-	✓	✓
Keyless Entry	✓	✓	✓	✓ (MT & Strong Hybrid)
Paddle Shifters	-	6AT	6AT	6AT
Gear Shift Indicator	Petrol MT	Petrol MT	Petrol MT	Petrol MT
Engine Drive Modes - Eco, Normal, Sport	-	Strong Hybrid	Strong Hybrid	Strong Hybrid
Terrain Modes - Snow, Sport, Lock, Auto	-	-	-	ALLGRIP

SAFETY & SECURITY				
Adaptive Cruise Control with all Speed Following & Stop Keeping & Curve Speed Reduction (ACC)	-	-	-	6AT
Lane Keep Assist (LKA)	-	-	-	6AT
Lane Departure Prevention (LDP)	-	-	-	6AT
Lane Departure Warning (LDW)	-	-	-	6AT
Vehicle Sway Warning	-	-	-	6AT
Automatic Emergency Braking (AEB) - Car to Car	-	-	-	6AT
High Beam Assist (HBA)	-	-	-	6AT
Rear Cross Traffic Alert (RCTA)	-	-	-	6AT
Forward Collision Warning (FCW)-Car to Car	-	-	-	6AT
Blind Spot Monitor (BSM) with Lane Change Alert (LCA)	-	-	-	6AT
Emergency Stop Signal (ESS)	-	-	-	6AT
Electronic Stability Program (ESP®)	-	✓	✓	✓
Traction Control System (TCS)	✓	✓	✓	✓
Engine Drag Control (EDC)	✓	✓	✓	✓
Hill Hold Assist	✓	✓	✓	✓
ABS with EBD and Brake Assist	✓	✓	✓	✓
Hill Descent Control	-	-	-	ALLGRIP
Electronic Parking Brake with Brake Hold	-	6AT	6AT	6AT
360° HD View Camera with 11 Views	-	-	-	✓
Front Parking Sensors with Auto 360° Camera Activation	✓	-	-	✓
Rear Parking Sensors	✓	-	-	✓
Reverse Parking Camera	-	-	-	✓
Tyre Pressure Monitoring System (TPMS)	-	✓	✓	✓
6 Airbags (Front, Side and Curtain)	-	✓	✓	✓
Front Seat Belt Pre-Tensioner with Force Limiters	-	✓	✓	✓
Front Seat Belt Height Adjuster	✓	✓	✓	✓
All Seats Belts (9-Point ELN) with Seat Belt Reminders (Lamp + Buzzer)	✓	✓	✓	✓
Seat Belt Reminder (All Occupants) - Lamp & Buzzer	✓	✓	✓	✓
ISOFIX Child Seat Anchorage	✓	✓	✓	✓
Engine Immobilizer	-	✓	✓	✓
Day & Night Adjustable IRVM	Manual	Manual	Auto	Auto
Warning Lamp/Reminder for (Low Fuel, Door Ajar, Headlamp On)	-	✓	✓	✓
Speed Warning Buzzer	✓	✓	✓	✓
Tyre Repair Kit	✓	✓	✓	✓
Acoustic Vehicle Alert System (AVAS)	-	Strong Hybrid	Strong Hybrid	Strong Hybrid

INFOTAINMENT SYSTEM				
SmartPlay Pro 17.78cm (7") Touch Screen	✓	✓	✓	-
SmartPlay Pro X 25.55cm (10.1") HD Touch Screen	-	-	-	✓
Infotainment & Sound	Infiniti Premium Sound 8-Speaker System with Centre Speaker & Subwoofer	-	-	✓
	Dolby Atmos Spatial Sound Experience	-	-	✓
	In built 8-Channel Amplifier with 5.1 Surround Sound	-	-	✓
	Alexa Auto Voice AI	-	-	✓
	App Store with OTT Apps	-	-	✓
	Suzuki Navigation App with Traffic, Speed and Camera Alerts	-	-	✓
Connectivity	OTA Updates	✓	✓	✓
	Wireless Android Auto, Apple CarPlay	✓	✓	✓
	Internet Connectivity	-	-	✓
	Internet Tethering from Smartphone	-	-	✓
	Connected Services Powered by New Gen Suzuki Connect	-	✓	✓
	Onboard Voice Assistant (Hi Suzuki with Barge In Feature)	✓	✓	✓
	Remote Control App	✓	✓	✓
Door Speakers	2	2	2	4
Front Tweeters	-	2	2	2
AC Temperature Display & Control on Screen	✓	✓	✓	✓
Steering Mounted Controls	✓	✓	✓	✓
Rotary Volume Control Knob	✓	✓	✓	✓

FEATURE SPECIFICATIONS				
VARIANTS	Lxi	Vxi	Zxi / Zxi (O)	Zxi+ / Zxi+ (O)
NEW GEN SUZUKI CONNECT-ADVANCED TELEMATICS SOLUTION SAFETY & SECURITY				
Emergency Alerts	-	✓	✓	✓
Breakdown Notification	-	✓	✓	✓
Roblem Vehicle Notification and Tracking	-	✓	✓	✓
Tow-Away and Tracking	-	✓	✓	✓
Geo-Fence	-	✓	✓	✓
Time Fence	-	✓	✓	✓
Valet Alert	-	✓	✓	✓
Emergency Calling	-	✓	✓	✓
TRIPS AND DRIVING BEHAVIOR				
Trip Summary	-	✓	✓	✓
Driving Behaviour (Score, Ranking, Comparison, Suggestions)	-	✓	✓	✓
Share Trip History	-	✓	✓	✓
Area Guidance	-	✓	✓	✓
Vehicle Location Sharing	-	✓	✓	✓
Send Coordinates & Trip to Car	-	✓	✓	✓
ALERTS AND NOTIFICATIONS				
Overspeeding	-	✓	✓	✓
Seatbelt	-	✓	✓	✓
AC Idling	-	✓	✓	✓
Trip (Start &End)	-	✓	✓	✓
Low Fuel	-	✓	✓	✓
Low Range	-	✓	✓	✓
Dashboard View	-	✓	✓	✓
Parking Brake Status	-	6AT	6AT	6AT
PM2.5 Monitoring	-	-	-	-
Vehicle Servicing-Related	-	✓	✓	✓
REMOTE FUNCTIONS				
Door Lock/Unlock Lock	-	✓	✓	✓
Hazard Light On/Off	-	✓	✓	✓
Headlight Off	-	-	✓	✓
AC On/Off	-	6AT/eCVT	6AT/eCVT	6AT/eCVT
Schedule AC	-	6AT/eCVT	6AT/eCVT	6AT/eCVT
Alarm	-	✓	✓	✓
Immobilizer Request	-	✓	✓	✓
Vehicle Health	-	✓	✓	✓
Smartwatch Connectivity	-	✓	✓	✓
Alexa Skill Connectivity	-	✓	✓	✓
COLOUR VARIANTS				
External Blue with Blush Black Roof (Dual Tone)	-	-	✓	✓
Sizzling Red with Blush Black Roof (Dual Tone)	-	-	✓	✓
Splendid Silver with Blush Black Roof (Dual Tone)	-	-	✓	✓
Eternal Blue	-	-	✓	✓
Sizzling Red	-	-	✓	✓
Mythic Green	-	-	✓	✓
Bluish Black	-	-	✓	✓
Splendid Silver	-	-	✓	✓
Magma Grey	✓	✓	✓	✓
Pearl Arctic White	✓	✓	✓	✓

Drive with a mileage of:

21.18' km/l (MT)	21.06' km/l (AT)	27.02' km/kg CNG	19.07' km/l (Petrol (ALLGRIP AT))	28.65' km/l (Strong Hybrid Petrol eCVT)	3 years 100 000 km WARRANTY** EXTENDABLE UP TO 6 YEARS	ELECTRONIC STABILITY PROGRAM
------------------	------------------	------------------	-----------------------------------	---	--	------------------------------

LEGEND: (✓) Available, (○) Not Available. Maruti Suzuki India Limited reserves the right to change without notice, price, colours, equipment specifications, and models and to discontinue models and/or replace any part or accessory with any other product. Accessories and features shown in the pictures may not be a part of standard fitment and may differ according to variants. | Black glass on vehicle is due to lighting effect. | Car colour may vary due to printing on paper. | Any offers made will be subject to availability of the product. For more details, contact your nearest Maruti Suzuki ARENA dealership. | *Fuel efficiency as certified by test agency under Rule 115 of Central Motor Vehicle Rules, 1989. | Remote AC operation is available only in Automatic Transmission variant. Suzuki Connect is subscription-based and a network-dependent telematics solution. For detailed features refer to the Suzuki Connect brochure. | Amazon, Alexa, and all related marks are trademarks of Amazon.com, Inc. or its affiliates. | Android Auto™ extends the Android platform into the car in a way that's purpose-built for driving. It is designed to minimize distraction so you can focus on driving with Google™ services like Google Maps™ and Google Search™. | Get the Android Auto app on Google Play™. | Android Auto is available in the countries listed at the following link: <https://www.android.com/auto/#the-road>. Most phones with Android 5.0+ work with Android Auto. <https://support.google.com/androidauto/#/6140477>. | Android, Android Auto, Google, Google Play and other marks are trademarks of Google Inc. | Apple and iPhone are trademarks of Apple Inc., registered in the U.S. and other countries | Apple CarPlay is a trademark of Apple Inc. | Apple CarPlay is available in the countries listed in the following link: <https://www.apple.com/ios/feature-availability/#applecarplay-appleappcarplay> | Apple CarPlay is compatible with the iPhone models listed in the following link: <https://www.apple.com/ios/carplay/> | Infinity is the trademark of HARMAN International Industries, Incorporated. | Dolby, Dolby Audio, Dolby Atmos and the double-D symbol are registered trademarks of Dolby Laboratories Licensing Corporation. | Some parts of the leather upholstery may contain man-made material. | For details on functioning of safety features including airbags, kindly refer to the Owner's Manual. | Suzuki Connect (available through phone/smartwatch / Suzuki Connect Skill for Amazon Alexa). | Suzuki Connect activation is necessary for App Store, Alexa Auto, Navigation App & Internet Connectivity to function. After expiration of pre-loaded data pack, customer may tether own mobile hotspot to continue using internet-based services. | If the vehicle's speed exceeds 80 km/h, then the primary level warning will beep twice every minute. And, if the speed goes above 120 km/h, the secondary level warning will keep beeping. If the vehicle's speed slows down to 118 km/h, primary warning will resume. If the vehicle is slowed down to 78 km/h, speed alert warning will stop. This buzzer does not indicate any malfunction in the vehicle. | ESP is the registered trademark of Mercedes-Benz Group AG. | **3 years or 100 000 km warranty - whichever is earlier. 6 years or 160 000 km - whichever is earlier. | Trademarks/logos being displayed belong to the respective owners.

